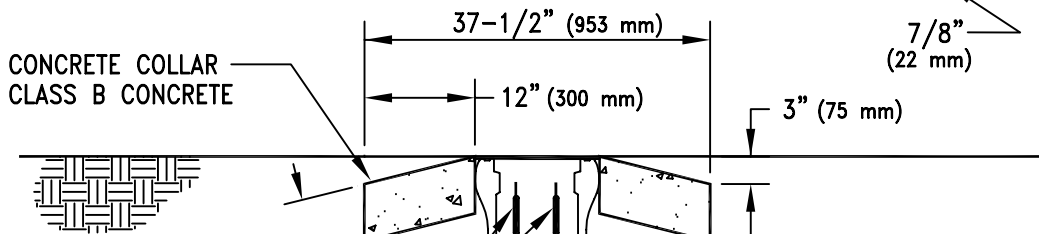
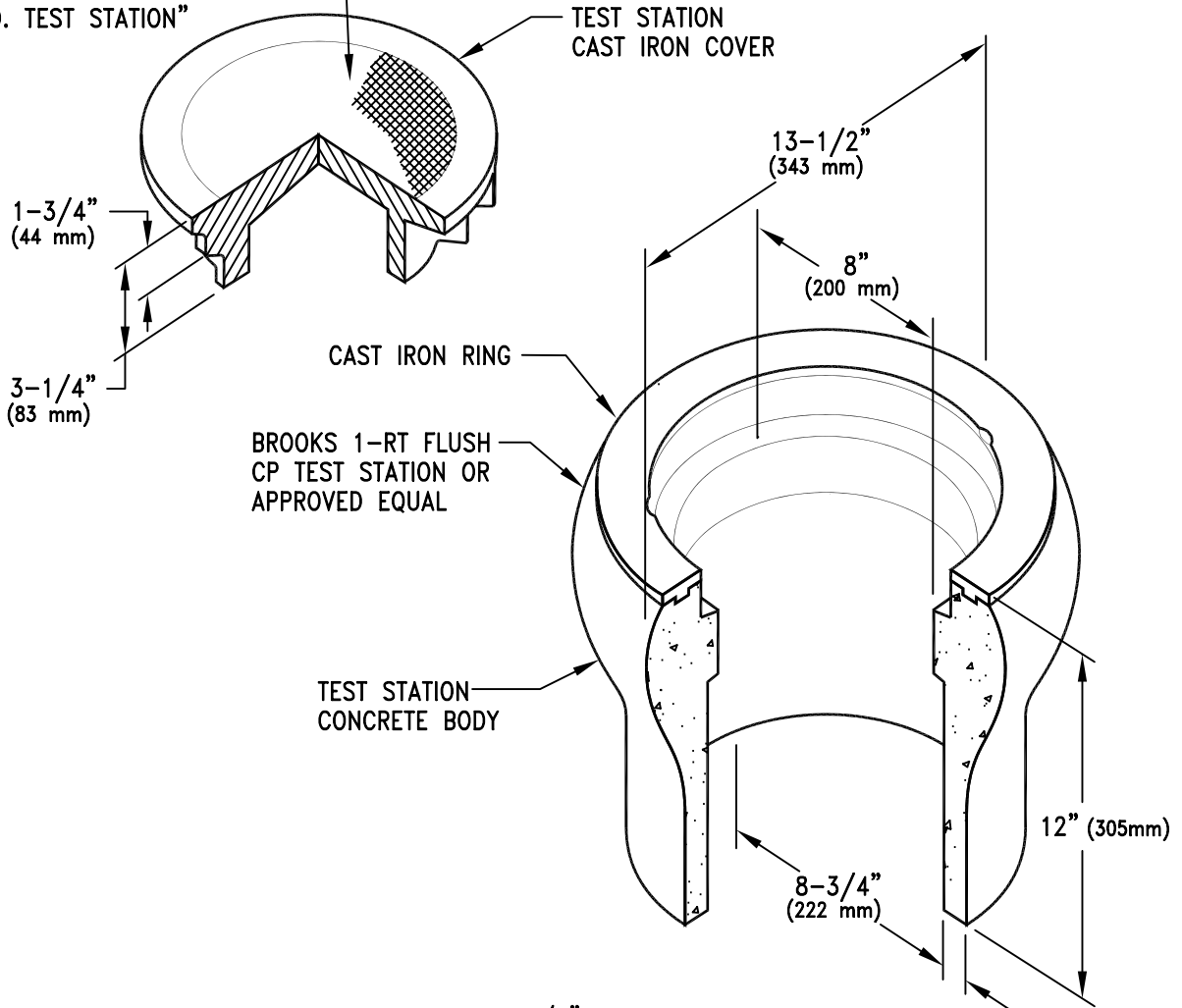



ARCWELD 1-1/2" (38 mm) LETTERING
 ONTO CAST IRON COVER
 "P.C.W.M.D. TEST STATION"



18" (460 mm) OF SLACK IN COILED LEADS,
 (LEADS TO BE IDENTIFIED. ANODE LEAD
 TO HAVE 2 KNOTS IN IT. TRACER
 WIRE RUNNING NORTHERLY OR
 EASTERLY TO HAVE ONE KNOT IN IT.
 TRACER WIRE RUNNING SOUTHERLY OR
 WESTERLY TO HAVE NO KNOTS IN IT.
 KNOTS TO BE LOCATED APPROXIMATELY
 6" (150 mm) FROM THE END OF THE LEADS.)

WIRE NUT BOTH LEADS TOGETHER

#14 GAUGE (1.5 mm²) SOLID COPPER WIRE
 with 15 MIL (380 μm) PVC OR POLYETHYLENE
 COATING

ISSUED:		STANDARD DETAIL		DETAIL NO.
8/92		TEST STATION		WWM 511
REVISED:				SHEET 1 OF 1
7/02				