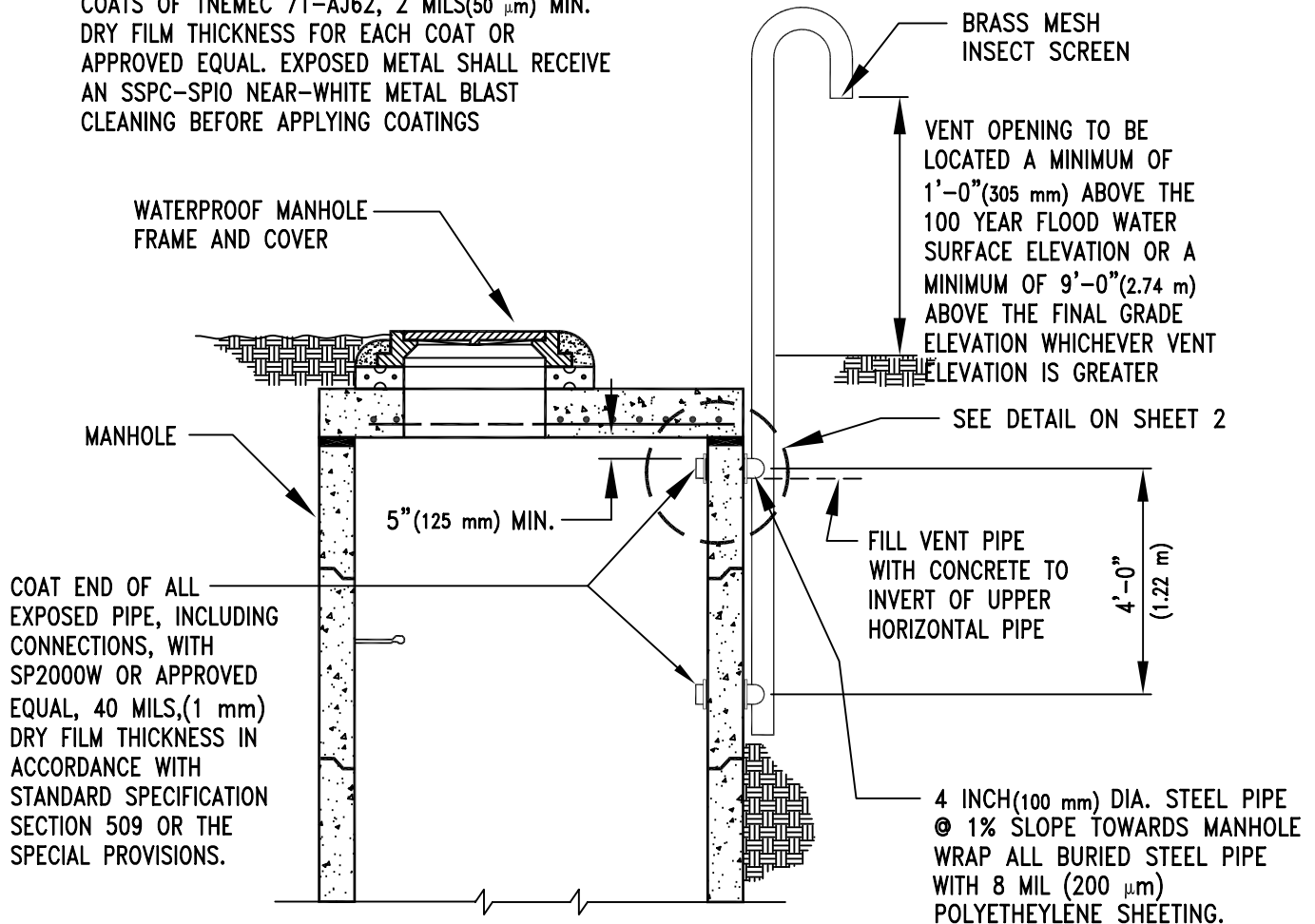




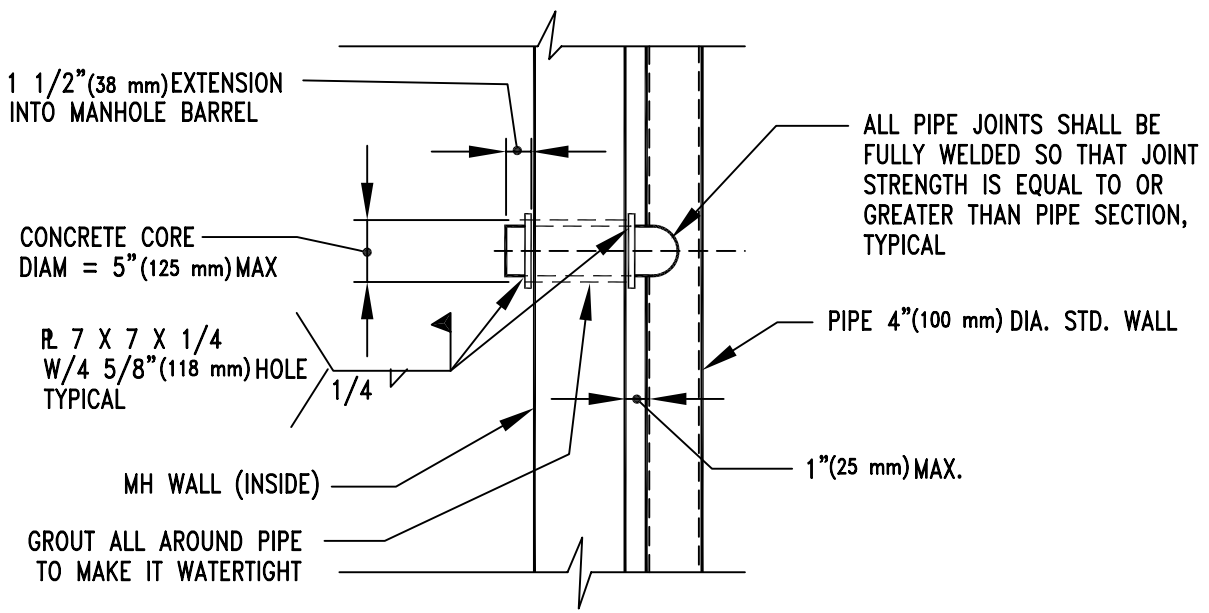
EXTERIOR COATINGS: ONE PRIMER COAT OF TNE MEC 104-1255, 8 MILS(200 μm) MIN. DRY FILM THICKNESS OR APPROVED EQUAL AND TWO FINAL COATS OF TNE MEC 71-AJ62, 2 MILS(50 μm) MIN. DRY FILM THICKNESS FOR EACH COAT OR APPROVED EQUAL. EXPOSED METAL SHALL RECEIVE AN SSPC-SPIO NEAR-WHITE METAL BLAST CLEANING BEFORE APPLYING COATINGS



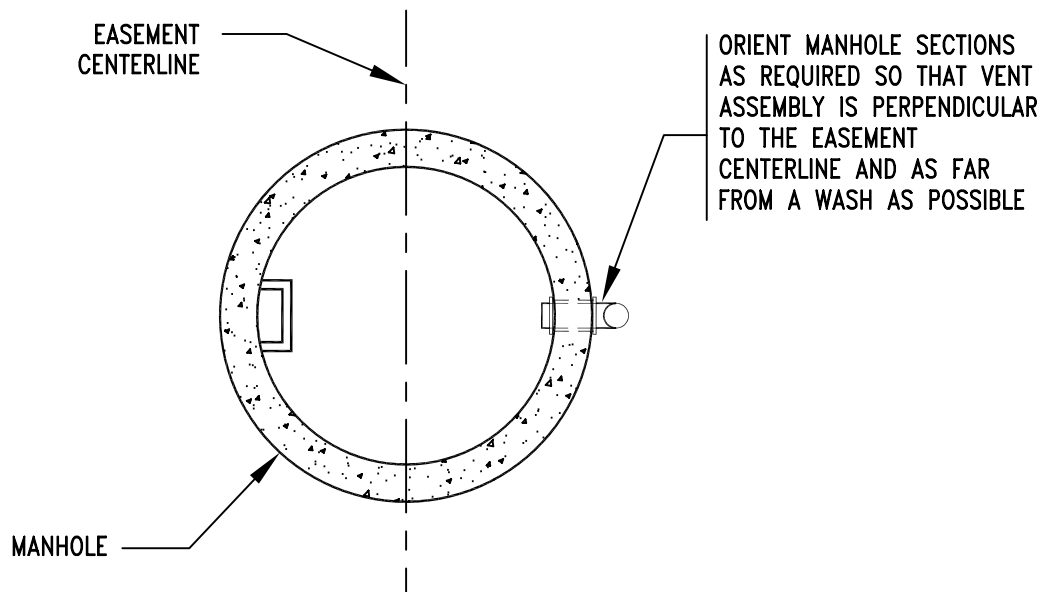
NOTES:

1. ALL STRUCTURAL SHAPES AND PLATES SHALL BE ASTM A-36 (A-36M). ALL STRUCTURAL SQUARE TUBE SHAPES SHALL BE ASTM A-500 GRADE B. ALL PIPE STEEL SHALL BE ASTM A-501 OR ASTM A53 TYPE E OR S, GR. B.
2. ALL STEEL PIPE (EXCEPT THE PORTION FILLED WITH CONCRETE) SHALL HAVE A 40 MIL(1 mm) DRY FILM THICKNESS SP2000W INTERIOR LINING. THE LINING SHALL MEET PCWMD SPECIFICATIONS.
3. NOTES 1 - 3 FROM STANDARD DETAIL WWM 221 APPLY.

ISSUED:		STANDARD DETAIL MODIFIED MANHOLE VENT ASSEMBLY		DETAIL NO.
8/92				WWM 221.2
REVISED:				SHEET 1 OF 2
7/02				

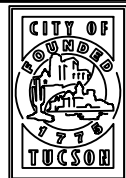


TYPICAL PIPE TO MANHOLE CONNECTION



VENT ASSEMBLY ORIENTATION

ISSUED:
8/92
REVISED:
7/02



STANDARD DETAIL
MODIFIED
MANHOLE VENT
ASSEMBLY



DETAIL NO.
WWM 221.2
SHEET 2 OF 2