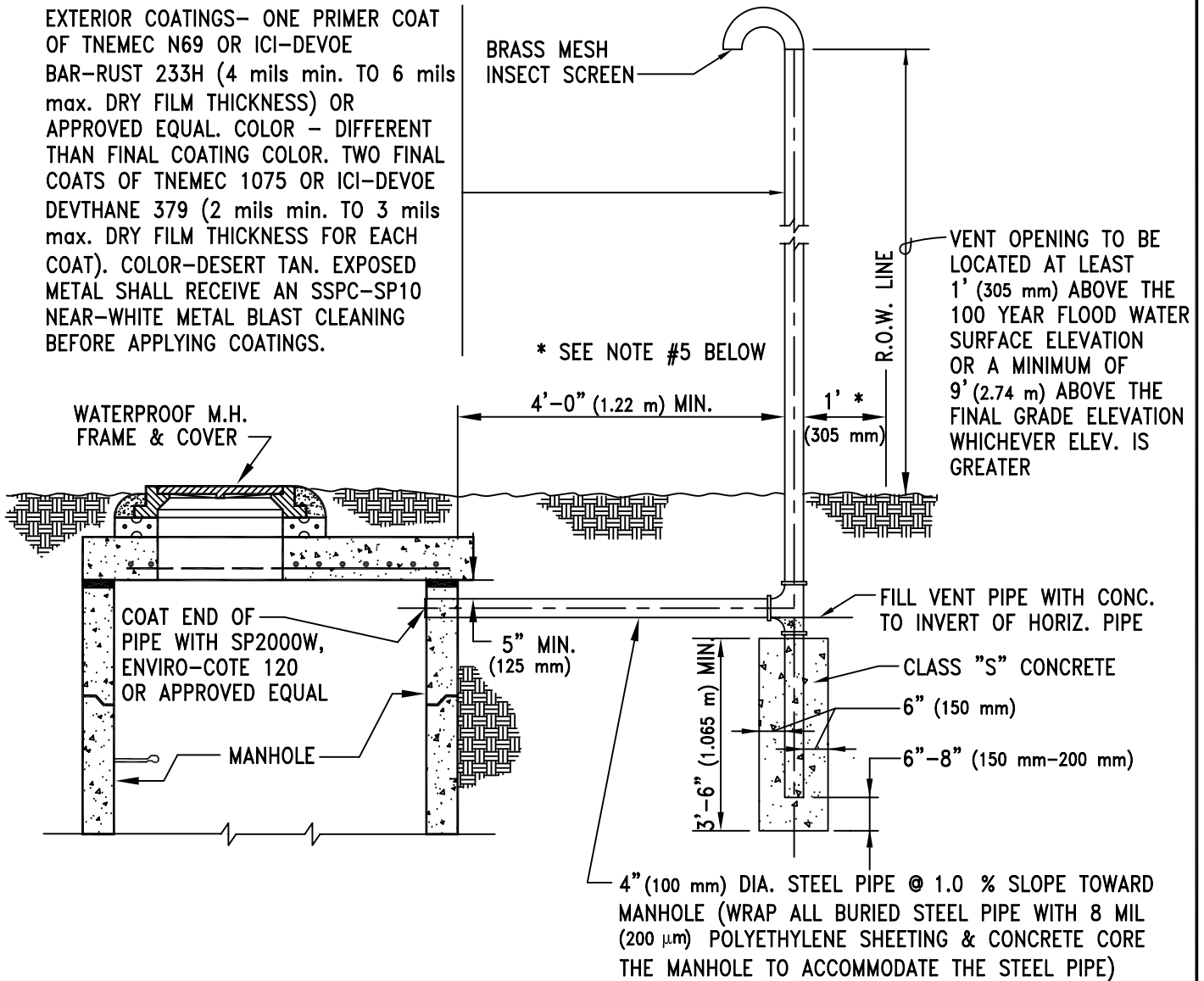
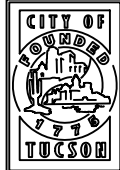



EXTERIOR COATINGS— ONE PRIMER COAT OF TNE MEC N69 OR ICI-DEVOE BAR-RUST 233H (4 mils min. TO 6 mils max. DRY FILM THICKNESS) OR APPROVED EQUAL. COLOR – DIFFERENT THAN FINAL COATING COLOR. TWO FINAL COATS OF TNE MEC 1075 OR ICI-DEVOE DEVTHANE 379 (2 mils min. TO 3 mils max. DRY FILM THICKNESS FOR EACH COAT). COLOR-DESERT TAN. EXPOSED METAL SHALL RECEIVE AN SSPC-SP10 NEAR-WHITE METAL BLAST CLEANING BEFORE APPLYING COATINGS.



NOTES:

1. WATERPROOF COVERS SHALL BE USED AT ALL MANHOLE LOCATIONS WITHIN IN A 100 YEAR FLOOD PLAIN AREA.
2. MANHOLE VENTS ARE REQUIRED AT EVERY OTHER MANHOLE IF THE MANHOLE SPACING IS EQUAL TO OR LESS THAN 500 FEET (152 m).
3. MANHOLE VENTS ARE REQUIRED AT EVERY MANHOLE IF THE MANHOLE SPACING IS GREATER THAN 500 FEET (152 m).
4. ALL STEEL PIPE, EXCEPT THAT PORTION WHICH IS FILLED WITH CONCRETE, SHALL HAVE A 40 MIL (1mm) SP2000W, ENVIRO-COTE 120, OR APPROVED EQUAL INTERIOR LINING IN ACCORDANCE WITH SECTION 509 OF THE STANDARD SPECIFICATIONS OR AS SPECIFIED BY THE SPECIAL PROVISIONS.
5. FOR SEWER LINES LOCATED WITHIN A ROAD RIGHT OF WAY, THE VENT PIPE SHALL BE LOCATED ONE (1) FOOT (305 mm) INSIDE THE RIGHT OF WAY LINE. TYPE 'A' POST BARRICADES, PER STD. DET. 106, SHALL BE LOCATED ON EITHER SIDE OF THE VENT PIPE.

ISSUED:		STANDARD DETAIL		DETAIL NO.
8/92		MANHOLE VENT		WWM 221.1
REVISED:		ASSEMBLY DETAIL		SHEET 1 OF 1
7/02				