

AUTOMOBILE SALVAGE YARDS FACT SHEET #1 Storm Water Notice of Intent



Pima County Department of
Environmental Quality
March 2011

AZPDES Storm Water Program

Through the Arizona Pollutant Discharge Elimination System (AZPDES) program, the Arizona Department of Environmental Quality (ADEQ) has established requirements for controlling storm water discharges that could adversely affect the quality of rivers, washes, and water bodies in Arizona. Even though many of the waterways in Pima County are dry streambeds during most of the year, the regulations are intended to protect our desert environment.

Automobile salvage yards (Sector M) must obtain storm water permit coverage. Businesses that must comply with the requirements identified in this brochure have a Standard Industrial Classification (SIC) Code of 5015 [Automobile Salvage Yards]. In other words, this fact sheet addresses those businesses that:

- store and sell used motor vehicle parts;
- impound and dismantle motor vehicles for the purpose of selling parts; and
- dismantle motor vehicles for scrap.



The U.S. Environmental Protection Agency (EPA) issued a Multi-Sector General Permit (MSGP-2000) on October 30, 2000. ADEQ has had authority for implementation, compliance, and enforcement of EPA's MSGP-2000 since assuming responsibility for the National Pollutant Discharge Elimination System (NPDES) program on December 5, 2002.

The MSGP-2000 expired in October 2005, but was administratively continued for facilities that had obtained coverage at the time it expired.

On December 20, 2010, ADEQ issued a new AZPDES Multi-Sector General Permit (MSGP-2010) for non-mining facilities. This permit became effective on February 1, 2011. All facilities in Arizona subject to ADEQ's MSGP-2010 are required to apply or reapply under the new permit.

The MSGP-2010 permit, and supporting documentation, may be found at the following website:

<http://www.azdeq.gov/environ/water/permits/msgp.html>

Notice of Intent to Discharge Storm Water

To obtain storm water permit coverage under the AZPDES Multi-Sector General Permit (MSGP-2010), Sector M (automobile salvage yards) facilities are required to submit a Notice of Intent (NOI) to ADEQ. The NOI form may be found at:

<http://www.azdeq.gov/environ/water/permits/download/2010/122010b.pdf>

Existing facilities have 120 days from the effective date of the MSGP-2010 (i.e., until May 31, 2011) to prepare a Storm Water Pollution Prevention Plan (SWPPP) and submit the Notice of Intent (NOI) to obtain coverage.

A facility in operation prior to the effective date of the MSGP-2010 must also develop a SWPPP and apply for coverage, even if the facility did not originally obtain coverage under EPA's MSGP-2000.



New facilities must submit a NOI and prepare a SWPPP as soon as possible and at least 32 business days before discharge is anticipated.

The NOI must be submitted to ADEQ at the following location:

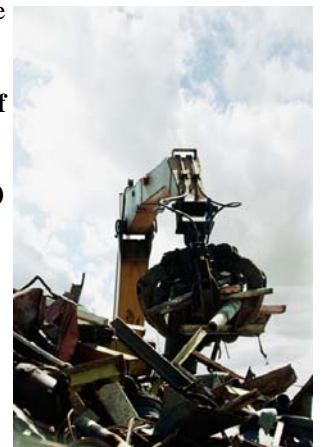
**Arizona Department of Environmental Quality
Surface Water Section/Stormwater Program
1110 West Washington, 5415A-1
Phoenix, Arizona 85007
FAX: 602-771-4528**

If a facility is located within the Pima County Storm Water Permit Area, a copy of the NOI must also be submitted to Pima County Department of Environmental Quality (DEQ). A map of the Pima County Storm Water Permit Area may be found at:

<http://www.pima.gov/deq/pdf/Water/NPDES2009.pdf>

The copy of the NOI should be sent to the following address:

**Pima County Department of
Environmental Quality
Storm Water Program
33 N. Stone Avenue, Suite 700
Tucson, Arizona 85701
FAX: 520-838-7432**



AUTOMOBILE SALVAGE YARDS FACT SHEET #1 Storm Water Notice of Intent



Pima County Department of
Environmental Quality
March 2011

Pima County Department of
Environmental Quality
33 N. Stone Ave., Suite 700
Tucson, Arizona 85701

Mailing
Address

Other Storm Water Requirements

Automobile Salvage Yards / Fact Sheet #1 Storm Water Notice of Intent

Automobile salvage yards must prepare and implement a Storm Water Pollution Prevention Plan (SWPPP). A SWPPP identifies structural controls and work practices that will minimize impacts caused by the offsite discharge of storm water.

A site-specific Storm Water Pollution Prevention Plan must, at a minimum:

- describe the layout, operations, and processes of your facility;
- list the pollutants that could impact storm water quality; and
- identify appropriate storm water pollution prevention measures to reduce the amount of pollutants in storm water discharges.

Storm water can become contaminated when rain mixes with oil, fuel, grease, chemicals, metals, and other fluids.

Procedures identified in a SWPPP, if implemented properly, may reduce the chance that storm water will become contaminated and released offsite.



Please refer to the following Pima County website (“*What is a Storm Water Pollution Prevention Plan?*”) for more details:

http://www.deq.pima.gov/pdf/water/What_is_a_SWPPP.PDF

For More Information

Pima County Department of
Environmental Quality
520-243-7400
Storm Water Program
<http://www.deq.pima.gov/water/stwmgmprog.html>



Arizona Department of
Environmental Quality
602-771-4501
Dennis Turner
<http://www.azdeq.gov/environ/water/permits/stormwater.html>