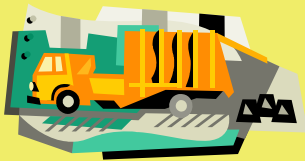


## LANDFILLS, OPEN DUMPS, and LAND APPLICATION SITES

### FACT SHEET #2 - Storm Water Pollution Prevention



Pima County Department of  
Environmental Quality  
March 2011

Storm water permittees are required to prepare and implement a Storm Water Pollution Prevention Plan (SWPPP). The SWPPP must identify structural and non-structural controls or work practices that will be put in place to minimize impacts caused by offsite storm water discharges. The following items must be addressed.

**BEST MANAGEMENT PRACTICES (BMPs)** are an integral part of a SWPPP. BMPs are developed and implemented to reduce the possibility of storm water pollution.

#### ***Active Landfills, Dumps, or Land Application Sites***

- Divert storm water flow around the site using structural measures such as dikes, berms, or swales.
- Maintain landfill cover and vegetation.
- Stabilize soils with temporary seeding, mulching, or by placing geo-textiles on the inactive portions of the stockpiles.
- Regularly inspect all stabilization and structural erosion control measures and perform all necessary maintenance and repairs.
- Stabilize exits from the site with gravel aprons to minimize track-out.
- Confine soil stockpiling to areas outside of drainage pathways and away from washes.
- Stabilize haul roads and entrances to the site with gravel or stone.
- Clean wheels and bodies of trucks or other equipment as necessary to minimize sediment tracking.



#### ***Chemical Material Storage Areas***

- Store drums, including empty or used drums, in a covered area.
- Provide secondary containment (such as berms or dikes).
- Regularly inspect storage tank systems and perform preventive maintenance.
- Clearly label drums and maintain an inventory of drum contents.
- Inspect storage tanks and piping systems (pipes, pumps, flanges, couplings, hoses, and valves) for failures or leaks and perform preventive maintenance.
- Properly dispose of chemicals that are no longer in use.
- Have absorbent pads easily accessible for spill clean ups.

- Develop and implement spill plans or spill prevention, containment, and countermeasure (SPCC) plans, if required for your facility.
- Train employees in spill prevention, control, and proper materials management.

#### ***Vehicle/Equipment Fueling***

- Conduct fueling operations (including the transfer of fuel from tank trucks) on an impervious or contained pad, and under a roof or canopy if possible.
- Use drip pans where leaks or spills of fuel can occur and where making and breaking hose connections.
- Keep spill cleanup materials readily available.
- Use dry cleanup methods for fuel areas rather than hosing the fuel area down. Follow procedures for sweeping up absorbents as soon as spilled substances have been absorbed.
- Inspect and perform preventive maintenance on storage tanks.
- Inspect the fueling area for leaks and spills.
- Provide curbing or posts around fuel pumps.

#### ***Vehicle/Equipment Maintenance***

- Perform cleaning operations on a concrete pad or indoors.
- Install a sump and have it pumped regularly by a licensed waste hauler or discharge the collected wash or rinse water to the sanitary sewer system (it may be necessary to obtain approval from the sewer authority).
- Do not pour liquids down a floor drain, unless connected to a sump or outdoor storm drain inlets.
- DO NOT discharge wash water to a storm drain.
- Dispose of greasy rags, oil filters, air filters, batteries, spent coolant, and degreasers properly.
- Inspect the maintenance area regularly for proper implementation of control measures.
- Train employees on proper waste control and disposal procedures.

#### ***Leachate Collection System***

- Divert flows around the site using structural measures such as dikes, berms, or swales.
- Frequently inspect the leachate collection system and landfill for leachate leaks.
- Maintain landfill cover and vegetation.
- Maintain leachate collection system.

#### ***Fertilizer, Pesticide, and Herbicide Applications***

- Strictly follow recommended application rates and methods (i.e., do not apply in excess of vegetative requirements).
- Have materials such as absorbent pads easily accessible to clean up spills.
- Inspect and maintain all containers used to prevent leaking.
- Implement employee training program for proper application and spill prevention.
- Store drums and containers indoors when possible.

