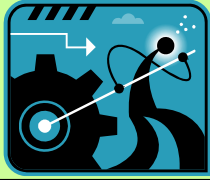


Do I Need an Industrial Storm Water Permit?



Pima County Department of
Environmental Quality
April 2010

Arizona Pollutant Discharge Elimination System Program

Through the Arizona Pollutant Discharge Elimination System (AZPDES) program, the Arizona Department of Environmental Quality (ADEQ) has established requirements to control **storm water** discharges that could harm the quality of waterways (flowing or dry).

Storm water means precipitation runoff, surface water runoff, or surface water drainage.

These regulations require many types of businesses to obtain permits to discharge storm water and to prepare a written Storm Water Pollution Prevention Plan (SWPPP).

But it hardly ever rains...

Although flowing streams are rare in southern Arizona, pollutant-laden storm water runoff from an industrial **facility** may adversely impact the desert environmental and clog drainage systems.

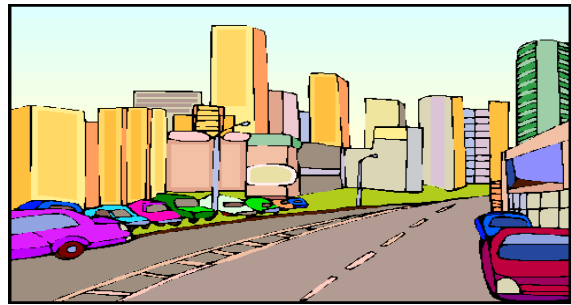
facility means any operation engaged in activities which are directly related to manufacturing, processing or raw materials storage at an industrial plant.

What is the Purpose of an Industrial Storm Water Permit?

The purpose of an Industrial Storm Water Permit, also called a *National Pollutant Discharge Elimination System (NPDES) Storm Water Multi-Sector General Permit for Industrial Activities (MSGP)*, is to ensure that industrial facilities properly monitor and control storm water to minimize impacts on the environment. If storm water runoff is not monitored and controlled, pollutants could be transported offsite. These contaminants may ultimately flow into rivers, washes, or other water bodies.

How Do I Know if I Need an Industrial Storm Water Permit?

Step 1: Determine whether your facility or business discharges to a **municipal separate storm sewer system (MS4)** or to waters of the United States. If your facility discharges to one or both, go to Step 2, otherwise no storm water permit is needed.



What is a Municipal Separate Storm Sewer System (MS4)?

A MS4 is a conveyance or system of conveyances (including roads with drainage systems, municipal streets, catch basins, curbs, gutters, ditches, man-made channels, or storm drains):

- (i) owned or operated by a state, city, county, district, or other public body...including special districts under state law such as a sewer district, flood control district or drainage district that discharges into waters of the U.S.;
- (ii) designed or used for collecting / conveying storm water;
- (iii) which is not a combined sewer; and
- (iv) which is not part of a publicly-owned treatment works.

Step 2: Determine if your facility's industrial activities fall within one of the eleven Categories of Industrial Activities. If your activities are listed, go to Step 3, otherwise no permit is needed.

Industrial storm water permits are required for specific types of business activities. Some categories are defined by a Standard Industrial Classification (SIC) code, and others are defined by a narrative description.

If any of the following categories on the next page apply to your business, you may be required to obtain storm water permit coverage.

Which Industries Are Regulated?

- 1) 40 CFR Subchapter N Industries: facilities subject to storm water effluent limitations guidelines
- 2) Heavy Industry: SIC 24 (except 2434), 26, (except 265 & 267), 28 (except 283), 311, 32 (except 323), 33, 3441, and 373
- 3) Mineral Industry: SIC 10, 12, 13, and 14
- 4) Hazardous Waste Industry: hazardous waste treatment, storage, or disposal facilities
- 5) Landfill Industry: industrial waste landfills, land application sites, and open dumps
- 6) Recycling Industry: metal scrap yards, battery re-claimers, salvage yards, automobile junkyards, and SIC 5015 & 5093
- 7) Power Generation Industry: steam electric power, including coal handling sites
- 8) Transportation Industry: SIC 40, 41, 42 (except 4221-4225), 43, 44, 45, 5171 that have vehicle maintenance shops, equipment cleaning operations, or airport deicing operations
- 9) Wastewater (Municipal or Domestic Sewage) Treatment Industry
- 10) Construction Industry: activities including clearing, grading, and excavation
- 11) Light Industry: SIC 20, 21, 22, 23, 2434, 25, 265, 267, 27, 283, 285, 30, 31 (except 311), 323, 34 (except 3441), 35, 36, 37 (except 373), 38, 39, 4221, 4222, and 4225

For a more detailed listing of the industrial categories, please go to either of the following websites:

<http://www.epa.gov/npdes/pubs/list.pdf>

http://cfpub.epa.gov/npdes/stormwater/covered.cfm?program_id=6

Step 3: Determine if your listed facility or site may qualify for the “*no exposure*” exclusion under the regulations. The conditional “*no exposure*” exclusion applies to ALL industrial categories, except for construction activities disturbing five or more acres.

No exposure means all industrial materials and activities are protected by a storm resistant shelter to prevent exposure to rain, snow, snowmelt, and/or run-off. Industrial materials or activities include, but are not limited to, material handling equipment or activities, industrial machinery, raw materials, intermediate products, by-products, final products, or waste products.

For a more detailed discussion of the “no exposure” exclusion, please refer to the EPA fact sheet entitled *Storm Water Phase II Final Rule, Conditional No Exposure Exclusion for Industrial Activity*, Office of Water (4203), EPA 833-F-00-015, January 2000. This fact sheet and the no exposure certification form may be found at either of the following websites:

<http://www.epa.gov/npdes/pubs/fact4-0.pdf>

<http://www.azdeq.gov/environ/water/permits/download/noexp.pdf>

How Do I Get An Industrial Storm Water Permit?

Until an Arizona-specific industrial storm water permit is issued, Arizona industries must use the federal industrial storm water permit. To be notified about future updates on the development of the AZPDES industrial storm water permit, ask to be put on the ADEQ mailing list by contacting Shirley Conard at Conard.Shirley@azdeq.gov.

Arizona state regulations require industrial facilities to obtain coverage under the *National Pollutant Discharge Elimination System (NPDES) Storm Water Multi-Sector General Permit for Industrial Activities* (MSGP-2000):

http://cfpub.epa.gov/npdes/stormwater/msgp.cfm?program_id=6

However, the MSGP-2000 expired in October of 2005. A new MSGP has not yet been issued. Facilities that obtained coverage under the MSGP-2000 prior to its expiration are automatically granted an administrative continuance of coverage. Facilities covered under the MSGP-2000 must continue to implement their Storm Water Pollution Prevention Plans (SWPPPs) and comply with permit requirements.

Facilities that did not obtain coverage under the MSGP-2000 prior to its expiration may not obtain coverage until a new MSGP is issued. Such facilities may not submit a Notice of Intent (NOI) for coverage under the MSGP-2000.

This does not mean that these industrial facilities may ignore the storm water program requirements. Operators of un-permitted facilities are still required to develop and implement SWPPPs as described in the MSGP-2000.

Notice of Intent (NOI)

To obtain coverage under a MSGP, an operator will file a NOI and develop and implement a Storm Water Pollution Prevention Plan (SWPPP).

A NOI must be filled-out and submitted to the following ADEQ location, with a copy sent to the Pima County Department of Environmental Quality:

**Arizona Department of Environmental Quality
Storm Water NOI, Water Quality Division
1110 West Washington Street
Phoenix, Arizona 85007
or FAX 602-771-4674**

A copy of the NOI may be downloaded from the following address:

<http://www.azdeq.gov/environ/water/permits/download/noi.pdf>

A NOI must be submitted at least two days prior to commencement of new industrial activity. New operators of existing facilities must submit a NOI at least two days prior to assuming operational control at existing facilities. A completed NOI indicates that an operator will comply with the terms of the multi-sector general permit.

Operators who submit a completed NOI are authorized to discharge storm water two days after the date the NOI is postmarked. ADEQ will confirm permit coverage through a letter containing a discharge authorization number.



“No Exposure Certification”

Facilities that meet the U.S. Environmental Protection Agency’s (EPA’s) standards for a “condition of no exposure” may apply for an exclusion from storm water permitting:

http://cfpub.epa.gov/npdes/stormwater/msgp.cfm?program_id=6

Storm Water Pollution Prevention Plan (SWPPP)

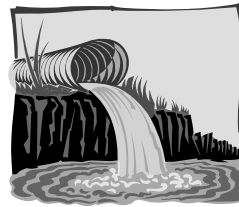
The multi-sector general permit requires operators to prepare and implement a Storm Water Pollution Prevention Plan (SWPPP). The SWPPP must:

- describe the activities at the facility;
- list the pollutants that could impact storm water quality;
- identify storm water pollution prevention measures, or best management practices (BMPs), to reduce the amount of pollutants in storm water discharges.

Information describing SWPPP requirements may be found at the following EPA website:

<http://cfpub.epa.gov/npdes/stormwater/msgp2006.cfm#sector>

A SWPPP identifies structural and non-structural controls or work practices to minimize impacts caused by offsite storm water discharges.



A copy of the SWPPP must be kept at the industrial facility. Federal, state, and local regulatory agencies have the authority to review the SWPPP at any time.

Notice of Termination (NOT)

Facilities that are permitted for storm water discharge may submit a NOT provided one of the following conditions is true:

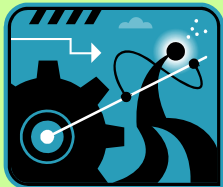
- all storm water discharges from an industrial facility have been eliminated; **or**
- the operator of the facility has changed, and a new operator is responsible for compliance [the new operator is responsible for submitting a NOI, if industrial activities continue].

A copy of the NOT may be downloaded from either of the following addresses:

<http://cfpub.epa.gov/npdes/stormwater/msgp2006.cfm#appendix>

<http://www.azdeq.gov/environ/water/permits/download/not.pdf>

Do I Need an Industrial Storm Water Permit?



Pima County Department of
Environmental Quality
April 2010

Pima County Department of Environmental Quality
33 N. Stone Avenue, Suite 700
Tucson, Arizona 85701
520-740-3340

MAILING LABEL

Do I Need an Industrial Storm Water Permit?



Where Can I Find More Information?

Storm Water Discharges from Industrial Facilities:

[http://cfpub.epa.gov/npdes/stormwater/indust.cfm?
program_id=6](http://cfpub.epa.gov/npdes/stormwater/indust.cfm?program_id=6)

Industrial Categories for Storm Water Permits:

<http://www.epa.gov/npdes/pubs/list.pdf>

Storm Water Pollution Prevention Plan Guidance:

[http://cfpub.epa.gov/npdes/stormwater/swppp-
msgp.cfm](http://cfpub.epa.gov/npdes/stormwater/swppp-msgp.cfm)

United States Environmental Protection Agency

NPDES Storm Water Program:

[http://cfpub.epa.gov/npdes/home.cfm?
program_id=6](http://cfpub.epa.gov/npdes/home.cfm?program_id=6)

Arizona Department of Environmental Quality

Dennis Turner / 602-771-4501

[http://www.adeq.state.az.us/enviro/water/permits/
stormwater.html](http://www.adeq.state.az.us/enviro/water/permits/stormwater.html)

Pima County Department of Environmental Quality

Bill Petroustou or Marc Herman / 520-243-7400

<http://www.deq.pima.gov/water/stwmgmprog.html>

City of Tucson / Department of Transportation

<http://dot.tucsonaz.gov/stormwater/>