

PROPOSED FUTURE CONSERVATION ACQUISITION BOND PROGRAM

Habitat Protection Priorities and Associated Lands

Habitat Protection Priorities (534,373 acres)

- Highest Priority Private (33,712 acres)
- Secondary Priority Private (54,594 acres)
- State (446,067 acres)

Associated Lands (94,327 acres)

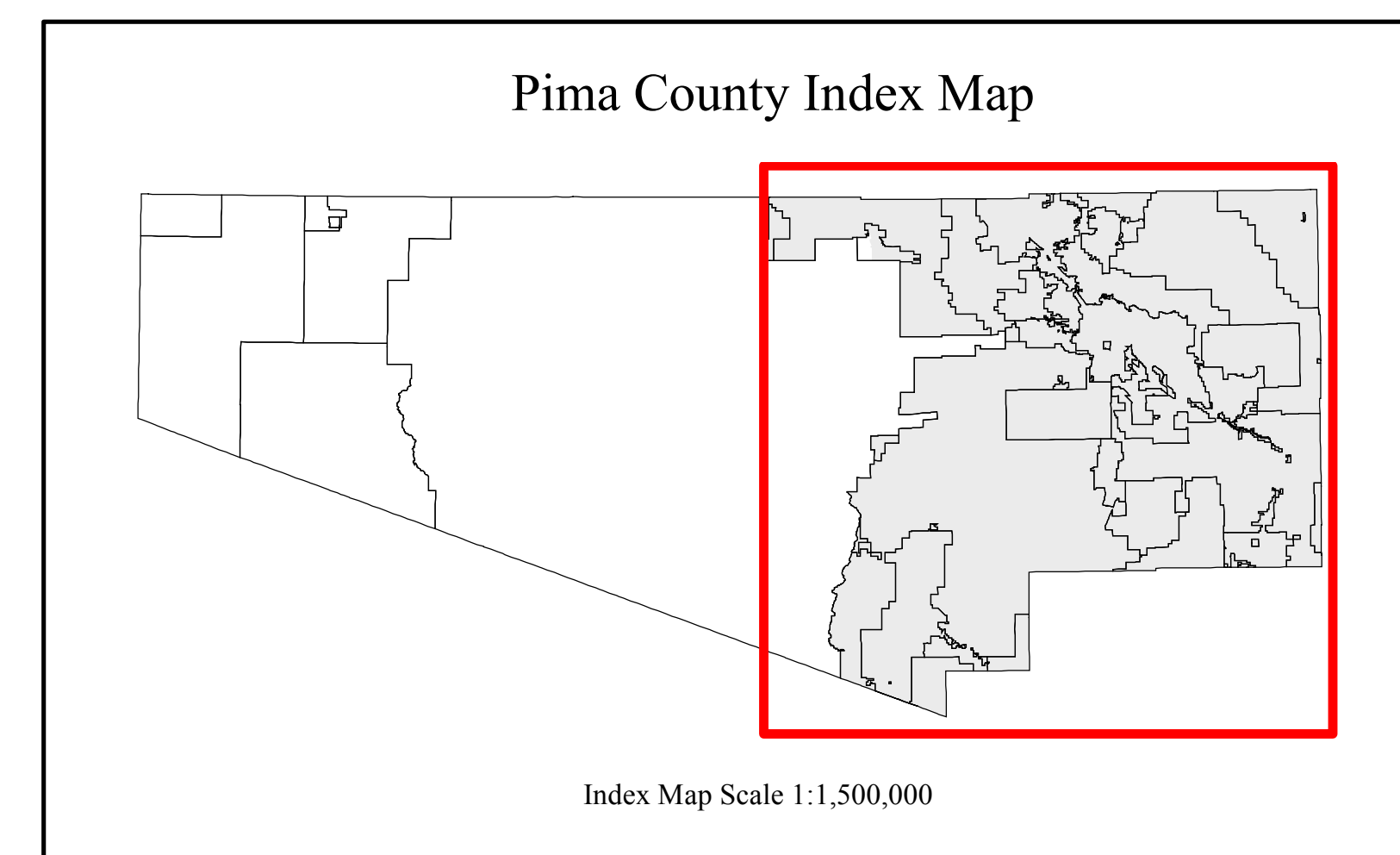
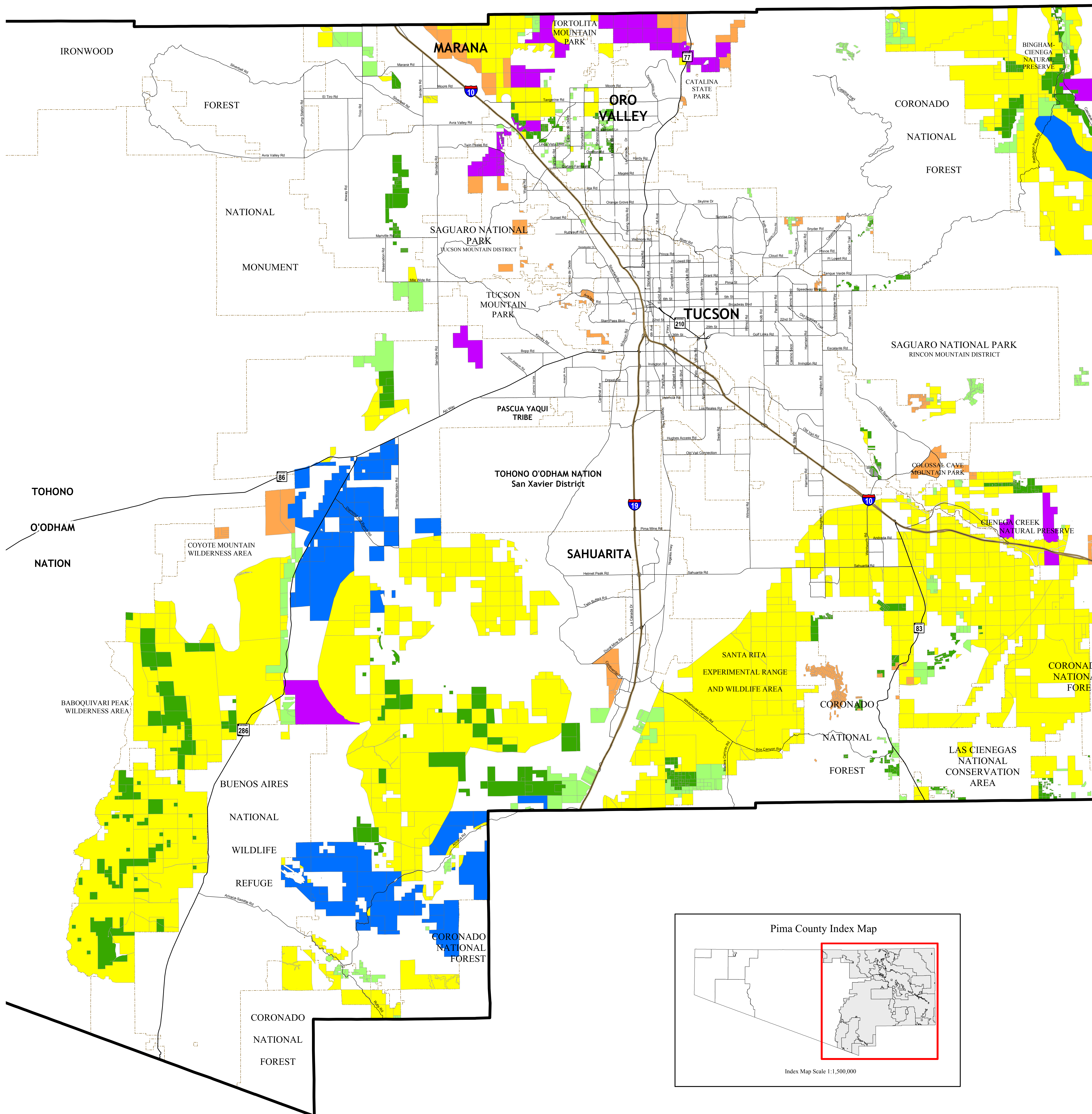
- Wildlife Corridors (27,330 acres)
- Non-HPP County Held State Grazing Leases (66,997 acres)

Community Open Space (23,284 acres)

- | | |
|---|---|
| <ul style="list-style-type: none"> A MOUNTAIN ALLEY ROAD PROPERTIES CAMINO DE OESTE CATALINA CONSERVATION EASEMENTS CATALINA STATE PARK EXPANSION COLOSSAL CAVE MTN PARK EXPANSION DOS PICOS DOUBLE XX RANCH GERLICH PROPERTY LOS MORTEROS GREEN VALLEY WEST DESERT PRESERVE HABITAT AT 36TH AND KINO KELLEY RANCH | <ul style="list-style-type: none"> MARANA MOUND SITE MT LEMMON NORTHERN ALTAR VALLEY PAINTED HILLS ROSEMONT RANCH SABINO CANYON SAGUARO NATIONAL PARK EAST EXPANSION SAGUARO NATIONAL PARK WEST EXPANSION TANQUE VERDE/AGUA CALIENTE CONFLUENCE 36TH STREET CORRIDOR TORTOLITA MOUNTAIN PARK EXPANSION TUCSON MOUNTAIN PARK EXPANSION |
|---|---|

Total Acres Eligible For Acquisition: 651,984

NOTE: NOT ALL ELIGIBLE PROPERTIES WILL BE ACQUIRED. The number of properties identified is in excess of the number that can be purchased with the proposed bond fund allocation. This provides the necessary flexibility during the property acquisition process. Some of these properties are eligible for purchase under the 2004 bond program, but are proposed for a future bond program as well because the number of properties exceeds the remaining 2004 bond funds available.

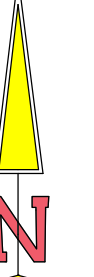


The information depicted on this display is the result of digital analyses performed on a variety of databases provided and maintained by several governmental agencies. The accuracy of the information presented is limited to the collective accuracy of these databases on the date of the analysis. The Pima County Department of Transportation Geographic Information Services Division makes no claims regarding the accuracy of the information depicted herein.

This product is subject to the Department of Transportation's Disclaimer and Use Restrictions.



Pima County Geographic Information Services
 201 North Stone Avenue - 9th Floor
 Tucson, Arizona 85701-1207
 (520)740-6670 - FAX: (520)798-3429
<http://www.dot.pima.gov>


 Scale 1:145,000



NOV 9, 2011